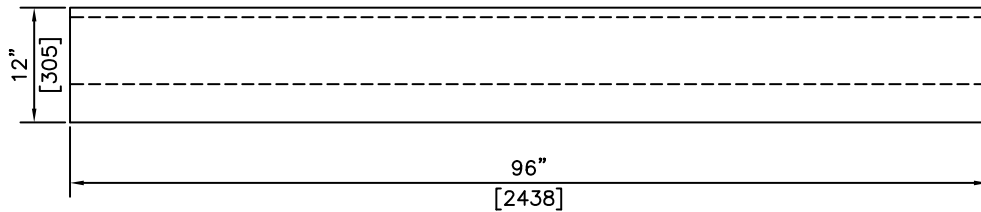
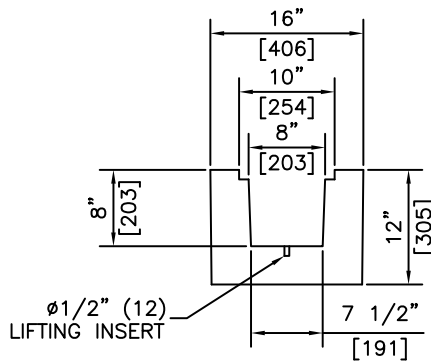


ISOMETRIC



SECTION



SECTION

NOTES:
 1) 27.6 MPa @ 28 DAYS

REVISED: MAR 10 2005



KON KAST
 products (2005) Ltd.
 "Committed To Quality And Service"

3440 UNIVERSITY WAY
 KELOWNA B.C.
 V1V 1V9
 PH: (250)765-1423
 FX: (250)765-0820

BY: PKR
 DATE: MAR 10 05
 SCALE: NTS

DRAINAGE TROUGH

ITEM NO.
1430