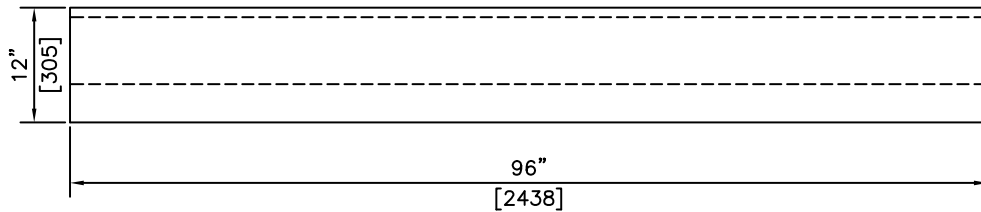
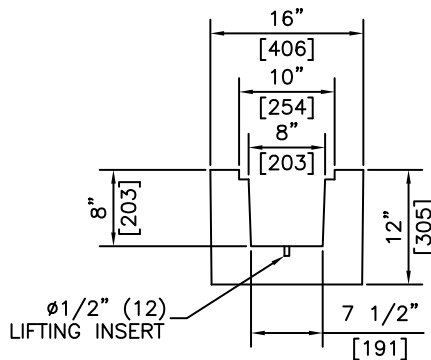


ISOMETRIC




SECTION



SECTION

NOTES:
1) 27.6 MPa @ 28 DAYS

REVISED: MAR 10 2005

 KON KAST products (2005) Ltd. "Committed To Quality And Service"	3440 UNIVERSITY WAY KELOWNA B.C. V1V 1V9 PH: (250)765-1423 FX: (250)765-0820	BY: PKR	DRAINAGE TROUGH	ITEM NO.
		DATE: MAR 10 05		1430
		SCALE: NTS		