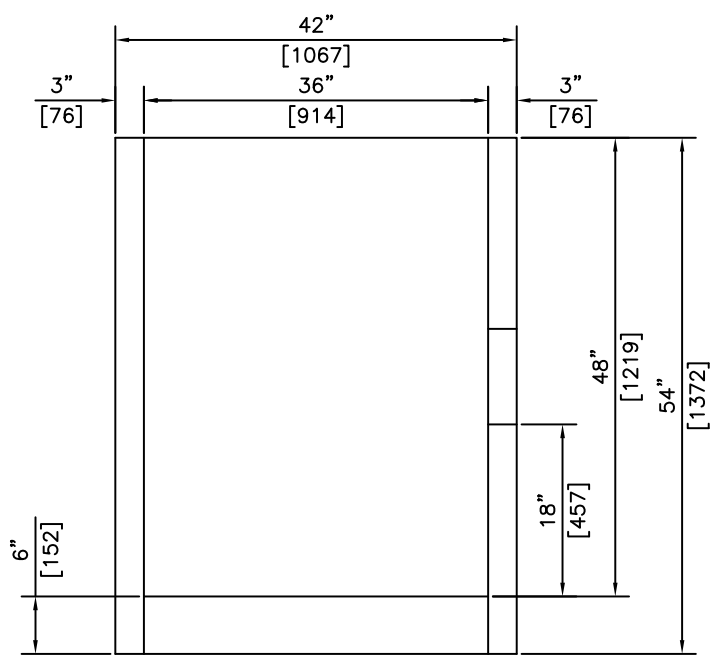


ø10" (254) KNOCKOUT (1 REQ'D)

NOTE:
c/w 2-2 3/16" UNI-LIFT
ANCHORS FOR HANDLING

ISOMETRIC




SECTION

NOTES:

- 1) MEETS OR EXCEEDS ASTM C478
- 2) 27.6 MPa @ 28 DAYS
- 3) MEETS H-20 LOADING

THIS CATCH BASIN IS NOT A MONOLITHIC UNIT.
THE BASE IS POURED INTO THE BARREL.
10M REBAR IS ANCHORED INTO THE WALL
FOR REINFORCEMENT.

REVISED: MAR 6 2006

 KON KAST products (2005) Ltd. "Committed To Quality And Service"	3440 UNIVERSITY WAY KELOWNA B.C. V1V 1V9 PH: (250)765-1423 FX: (250)765-0820	BY: PKR DATE: FEB 9 05 SCALE: NTS	36" (900) I.D. CATCH BASIN 54" (1372) HEIGHT	ITEM NO. <div style="text-align: center; font-size: 24pt; font-weight: bold;">803</div>