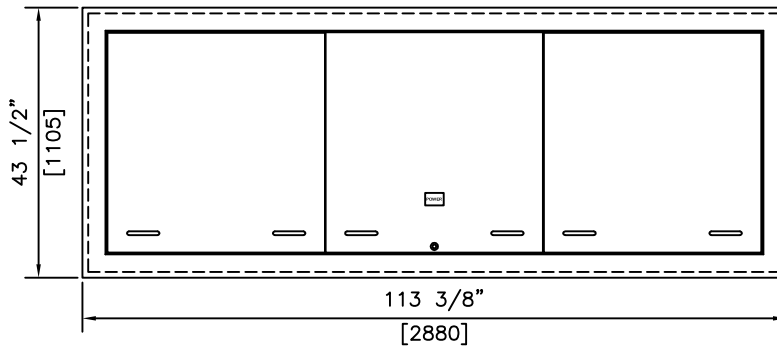
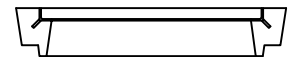
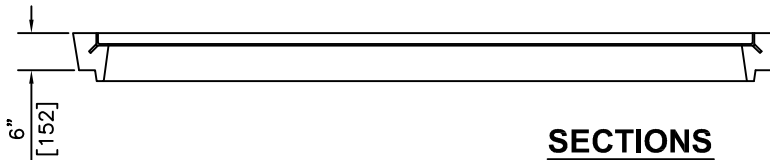


ISOMETRIC

Ø1/2" (13) LIFTING INSERTS
c/w 10M REBAR 6" LONG WELDED
TO THE FERRULE



PLAN VIEW - c/w STEEL LID




SECTIONS

NOTES:

- 1) 30 MPa @ 28 DAYS
- 2) MEETS H-20 LOADING
- 3) SULPHATE RESISTANT CONCRETE

REVISED: MAY 15 2012

 <p>KON KAST products (2005) Ltd. "Committed To Quality And Service"</p>	<p>1313 INNOVATION DR KELOWNA B.C. V1V 3B3 PH: (250)765-1423 FX: (250)765-0820</p>	BY: PKR	<p>832 JUNCTION VAULT CONCRETE COLLAR & STEEL LID</p>	DRAWING
		DATE: MAR 7 05		<p>1033</p>
		SCALE: NTS		