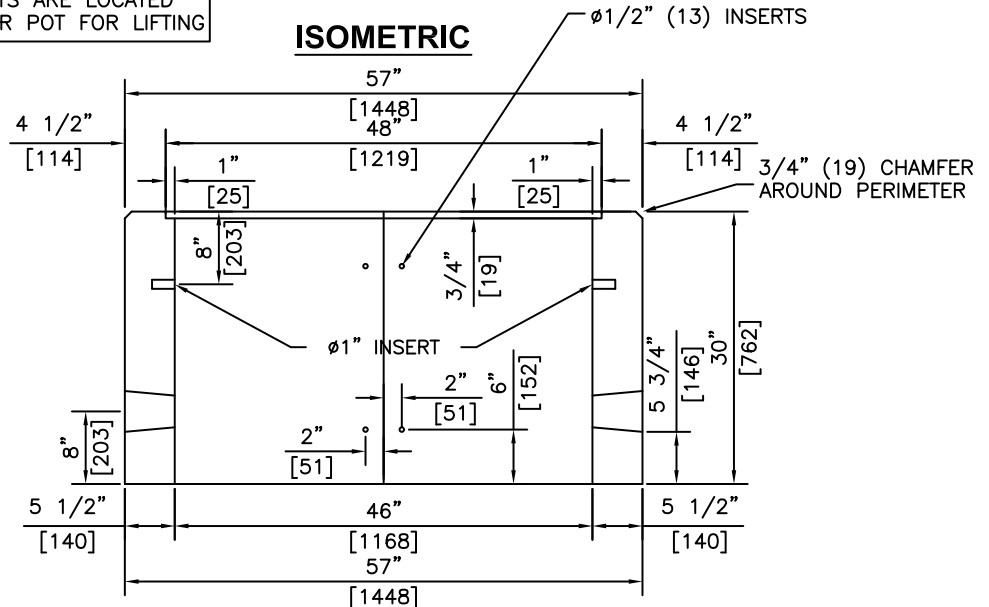


**NOTE:**  
4 - Ø1" (25) INSERTS ARE LOCATED ON INSIDE OF FLOWER POT FOR LIFTING

**ISOMETRIC**



**SECTION**

**NOTES:**  
1) 27.6MPa @ 28 DAYS

ITEM No.	DESCRIPTION
1756P	AS SHOWN
1756E	AS SHOWN WITH EXPOSED AGG. FINISH

REVISED: MAR 22 2005



**KON KAST**

products (2005) Ltd.  
"Committed To Quality And Service"

3440 UNIVERSITY WAY  
KELOWNA B.C.  
V1V 1V9  
PH: (250)765-1423  
FX: (250)765-0820

BY: PKR

DATE: MAR 25 05

SCALE: NTS

**58" (1467)  
SPLIT SQUARE  
FLOWER BOX**

ITEM NO.

**1756PS**