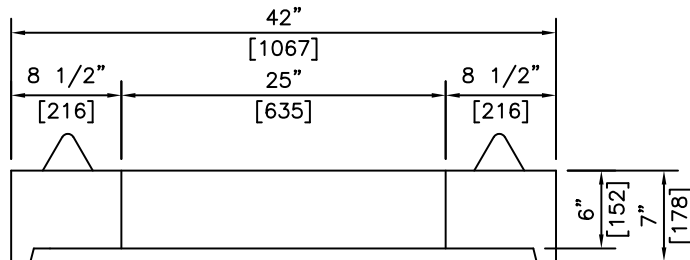
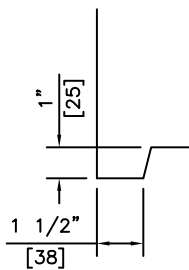


**ISOMETRIC**



**SECTION**



**DETAIL**

**NOTES:**

- 1) MEETS OR EXCEEDS ASTM C478
- 2) 27.6 MPa @ 28 DAYS
- 3) MEETS H-20 LOADING

REVISED: FEB 7 2005



**KON KAST**  
products (2005) Ltd.

"Committed To Quality And Service"

3440 UNIVERSITY WAY  
KELOWNA B.C.  
V1V 1V9  
PH: (250)765-1423  
FX: (250)765-0820

BY: PKR

DATE: FEB 7 05

SCALE: NTS

**42" (1067) O.D. LID**  
**Ø 25" (635) OPENING**  
**FOR 36" (900) BARREL**

ITEM NO.

**715**